


GRANDE

Technical specifications | Technische Daten | Spécifications techniques

Manufacturing technique Herstellungstechnik Technique de fabrication		1/10 printed saxony 1/10 Druck-Saxony 1/10 saxony imprimée
Pile composition Material der Nutzschrift Composition du velours		100% PA 6.0 Crealon 
Secondary backing Rückenausstattung Dossier		Weaveback
Width Breite Largeur		400 cm
Roll length Rollenlänge Longeur du rouleau		25 m
Pile height Polhöhe Hauteur du velours	ISO 1766	7 mm
Pile weight Polgewicht Poids du velours		1000 g/m ²
Total height Gesamthöhe Hauteur totale	ISO 1765	9 mm
Total weight Gesamtgewicht Poids total	ISO 8543	2065 g/m ²

Number of tufts Noppenzahl Nombre de points	ISO 1763	200 700/m ²
Base cloth Basisdecke Base tuft		Tcommodore 1000
Fastness to rubbing (dry) Reibechtheit (trocken) Solidité au frottement (sec)	ISO 105 X12	4-5
Fastness to rubbing (wet) Reibechtheit (nass) Solidité au frottement (humide)	ISO 105 X12	4-5
Water fastness Wasserechtheit Solidité à l'eau	ISO 105 E01	4-5
Fastness to light Lichtehtchtheit Solidité à la lumière	ISO 105 B2	5
Thermal resistance Wärmedurchlasswiderstand Résistance thermique	ISO 8302	0,0813 m ² K/W
Impact sound insulation Trittschalldämmung Réduction de la transmission du bruit de choc	ISO 140 - 8	28 dB
DOP Nr / DOP n°		1087#00554/WICR



CARUS®

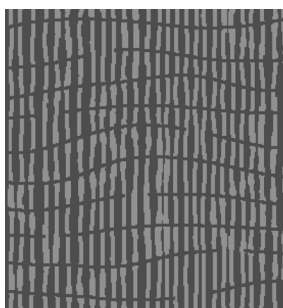
BIG Floorcoverings nv
Rijksweg 442
B-8710 Wielsbeke - Belgium

Showroom
Boffonstraat 3
B-8710 Wielsbeke - Belgium

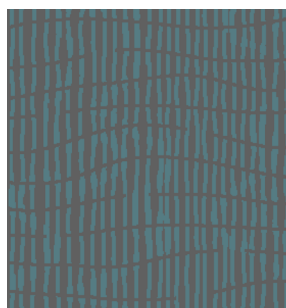
www.carusflooring.com
carus@bintg.com
T +32 (0)56 67 42 11 - F +32 (0)56 67 48 30

GRANDE GLORY

Pattern repeat: 100 x 100 cm



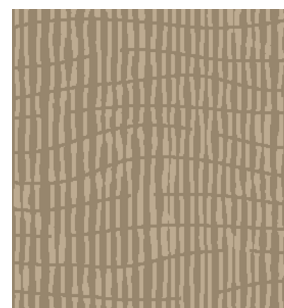
169



209



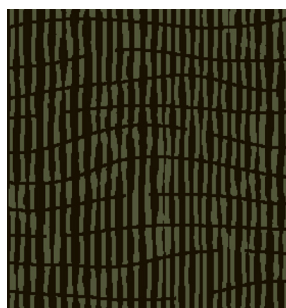
937



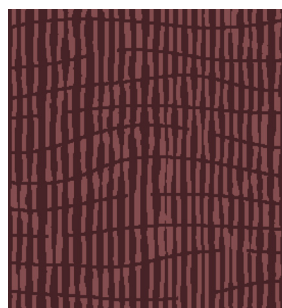
374



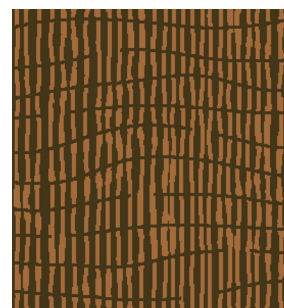
282



199



826



987

CARUS[®]

BIG Floorcoverings nv
Rijksweg 442
B-8710 Wielsbeke - Belgium

Showroom
Boffonstraat 3
B-8710 Wielsbeke - Belgium

www.carusflooring.com
carus@bintg.com
T +32 (0)56 67 42 11 - F +32 (0)56 67 48 30